



JUNE 2000

1303.8

BUSINESS INDICATORS

**AUSTRALIAN
CAPITAL
TERRITORY**

EMBARGO: 11:30AM (CANBERRA TIME) FRI 23 JUNE 2000

C O N T E N T S

	<i>page</i>
Notes	2
Summary of findings	3
Selected business indicators	6
FEATURE ARTICLES	
Sports Attendance	7
Attendance at Selected Cultural Venues	8
TABLES	
1 Business expectations: trading performance, operating income	9
2 Business indicators	10
3 ACT in relation to the rest of Australia	13
4 ACT in relation to the rest of Australia—percentage changes	14

- For further information about these and related statistics, contact Zoe Rivers on Canberra 02 6207 0286, Barbara Dehne on Canberra 02 6207 0277, or the National Information Service on 1300 135 070.

NOTES

FORTHCOMING ISSUES

<i>ISSUE</i>	<i>RELEASE DATE</i>
July 2000	28 July 2000
August 2000	25 August 2000
September 2000	22 September 2000
October 2000	27 October 2000
November 2000	24 November 2000
December 2000	22 December 2000

SYMBOLS AND OTHER USAGES

ACT	Australian Capital Territory
n.a.	not available
no.	number
n.p.	not available for publication
p	preliminary
. .	not applicable
*	Represents data with a standard error of greater than 25%. Caution should be exercised when using this data.
—	nil or rounded to zero

Dalma Jacobs
Regional Director, Australian Capital Territory

SUMMARY OF FINDINGS

UPDATED SERIES

Series updated since the April 2000 issue are: population, labour force, housing finance, industrial disputes, building approvals, new motor vehicle registrations, retail turnover, house price index, wage cost index, consumer price index, and average retail prices. The feature articles this month on pages 7–8 are Sports Attendance and Attendance at Selected Cultural Venues.

Population During the December 1999 quarter the ACT population increased by 0.1% (429 persons) to 311,189 persons. During the same period the national population grew by 0.3% to 19,080,797 persons. The rate of population increase in Canberra has rapidly recovered from the –0.5% in the year to December 1997. This was the period of peak net interstate migration outflow from Canberra. Population growth has steadily recovered to reach 0.9% for the year to December 1999, much higher than 0.4% for the year ending December 1998. However, current population growth is still less than the national average of 1.2% for the year to December 1999.

During the December quarter 1999 there was a net migration out of the ACT of 231 persons. This compares with 62 persons for the September quarter 1999. The level of interstate migration out of Canberra is steadily recovering from the peak levels of outflow in the year to December 1997 of 3,900 persons.

Natural increase provides the main source of population growth in the ACT and for the year ending December 1999 the natural increase was 2,937 people, remaining steady over the same period ending December 1998 (2960 people).

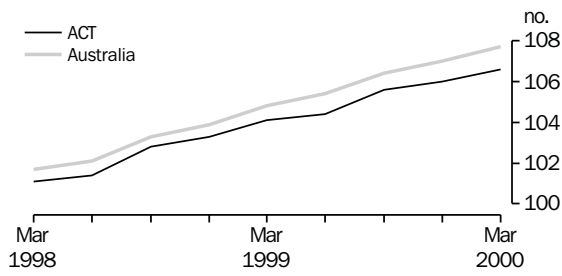
Labour force At May 2000, the trend unemployment rate for the ACT rose to 5.5% up one percentage point over April 2000 (5.4%) and a decrease of 0.4 percentage points since May 1999. The number of persons unemployed rose 2.1% to 9,600 compared to the previous month, and decreased 3% compared with May 1999. Compared with last month, ACT trend employment in May 2000 rose by 0.1% to 165,900 persons over the previous month and increased 5% over the last 12 months. The trend ACT participation rate remained steady at 72.7%, while the national rate rose 0.1 percentage point to 63.7%. Nationally, trend employment increased by 0.2% to 9,015,400 persons in May 2000, while the trend unemployment decreased by 0.1% (to 654,400 persons). The national trend unemployment rate continued to remain steady at 6.8%.

Housing finance	The trend number of dwelling units financed (including re-financing) in the ACT in April 2000 was 892, a decrease of 3.1% over the previous month. The trend estimate for the value of commitments in the ACT in April 2000 decreased by 1.6% to \$122 million compared with the previous month. Refinancing of existing dwellings in April 2000 comprised remained steady at 13% of the total value of dwelling units financed, compared with March 1999. Nationally, the trend number of dwelling units financed (including refinancing) during April 2000 was 43,116, down 3.2% compared with the previous month, while the trend estimate for the value of commitments also decreased by 3.3% to \$6,053 million compared with the previous month.
Industrial disputes	In the 12 months to February 2000 in the ACT there were 30 working days lost per thousand employees in the ACT compared to 91 days nationally. In comparison, in the 12 months ended February 1999, there was a decrease of in the number of working days lost of 9% for the ACT and an increase of 25% nationally.
Average weekly earnings	Trend full-time adult ordinary time earnings in the ACT were \$901.90 in the February quarter 2000, an increase of \$19.50 (2%) since the previous quarter, and up \$62.30 (7.4%) since February quarter 1999. Comparable national trend full-time adult ordinary time earnings were \$772.00 in the February quarter 2000, up \$8.80 (1.2%) over the previous quarter and \$26.80 (3.6%) over February quarter 1999.
Building approvals	<p>The trend number of dwelling units approved in the ACT increased by 0.5% to 215 dwelling units in April 2000. Nationally, the trend number of dwelling units approved decreased by 4.1% to 13,747 dwelling units in April 2000.</p> <p>The value of non-residential building approvals in the ACT in April 2000 was \$22.9 million, an increase of \$18.0 million over the previous month and an increase of \$2.3 million in comparison with April 1999. Nationally, the value of non-residential building approvals for April 2000 was \$936.1 million, an increase of 3% over the previous month, and an increase of 14.5% over April 1999.</p>
New motor vehicle registrations	The trend estimate for ACT new motor vehicle registrations in April 2000 was 1,122, down 1% from the previous month, and a fall of 4% compared to April 1999. Nationally, the trend for total new motor vehicle registrations in April 2000 decreased by 1% to 61,925 from March 2000, and was down 6% compared with April 1999.
Established house price index	The established house price annual index for the ACT during the March quarter 2000 increased by 2.9% from the previous quarter and was up by 8.9% compared to March quarter 1999. Nationally, the established house price index increased by 1.8% over the previous quarter and was up by 9.6% compared with the March quarter 1999.

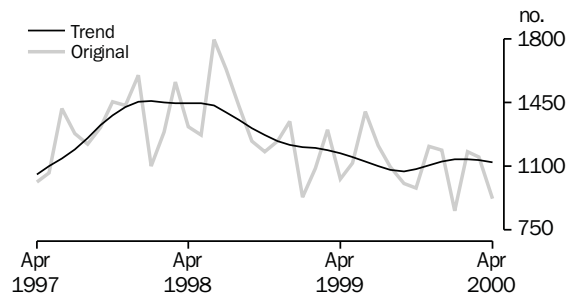
Wage cost index	The public sector wage cost index in the ACT for the March quarter 2000 increased 0.5% from the previous quarter, and was up 1.8% from the March quarter 1999. The wage cost index for the private sector increased 0.9% in the March quarter 2000, and was up 3.4% compared to the March quarter 1999. The overall wage cost index for the March 2000 quarter increased 0.6% over the previous quarter, and increased 2.4% over the March quarter 1999. Nationally, the overall wage cost index increased 0.7% over the previous quarter and was up 2.8% compared with the March quarter 1999.
Retail turnover	The trend estimate for retail turnover in the ACT for April 2000 was \$238.8 million, an increase of 0.8% over the previous month and up 8.7% compared to April 1999. The national trend retail turnover recorded a decrease of 0.1% over the previous month and was up 2.2% compared with the previous year.

SELECTED BUSINESS INDICATORS

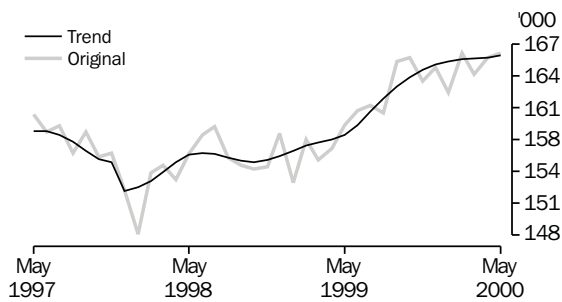
WAGE COST INDEX,
Total hourly rates of pay excluding bonuses



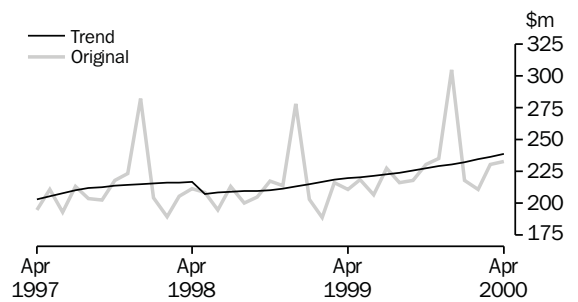
NEW MOTOR VEHICLE REGISTRATIONS



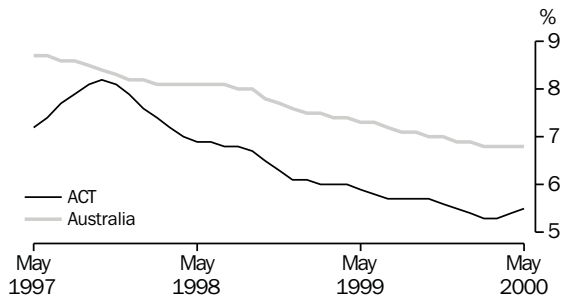
LABOUR FORCE, Employment



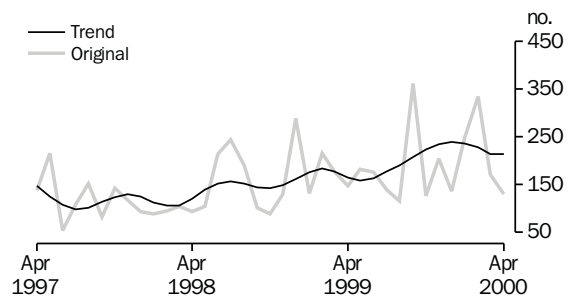
RETAIL TURNOVER



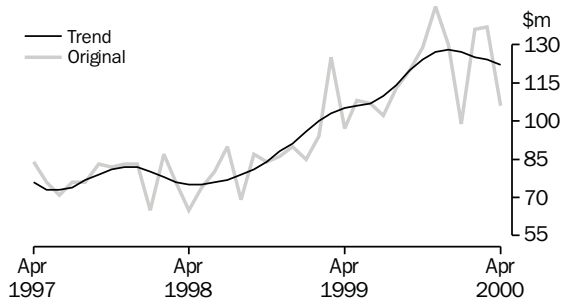
LABOUR FORCE—TREND UNEMPLOYMENT RATE



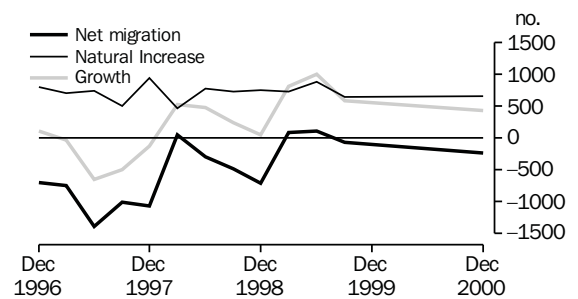
BUILDING APPROVAL—DWELLING UNITS APPROVED



HOUSING FINANCE



COMPONENTS OF POPULATION GROWTH



SPORTS ATTENDANCE

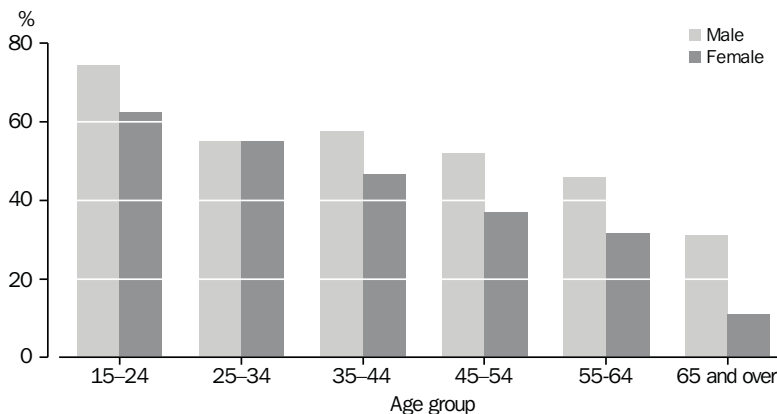
During the 12 months ending April 1999, 117,900 persons, or 38% of the ACT population aged 15 years and over, attended sporting matches or competitions (excluding junior and school sport).

There were 10,500 more males than females who attended sport at some time during the 12 months prior to April 1999. Of the total ACT population aged 15 years and over, 21% represented males who attended sport in the 12 months ending April 1999, compared with 17% representing females.

For both sexes, sports attendance gradually declined with age. The attendance rate for persons aged 15–24 years was 68.6%, more than three times that of persons aged 65 years and over (19.8%).

For each age group, males had an attendance rate significantly higher than that for females except for the 25–34 age group where males and females rated equally.

SPORTS ATTENDANCE, By Age and Sex



ATTENDANCE AT SELECTED CULTURAL VENUES

This article presents results from the Survey of Attendance at Selected Culture/Leisure Venues, April 1999, which provides the basic demographic characteristics of persons who attended the surveyed venues or activities during the 12 months ending April 1999.

Attendance rates were highest for persons primarily in the lower to middle age groups, with persons aged 65 years and over usually participating at significantly lower rates than persons in the other age groups. The three highest attendance rates for the ACT were for cinema (73.5%), library (45.8%) and botanic gardens (40.9%).

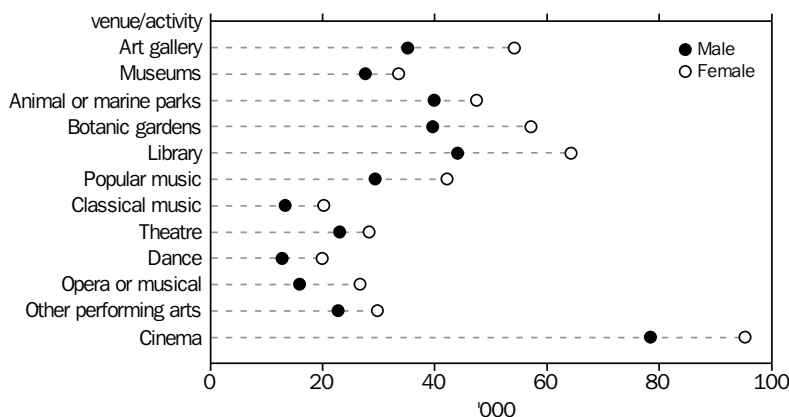
Across Australia and the ACT, cinema had the highest rate of attendance for all age groups. Attendance rates for museum, opera or musical, library, and other performing arts recorded highest in the 15–17 years age group. Art gallery and botanic garden attendance rated highest in the 55–64 years age group, while classical music, theatre and dance rated highest in the 45–54 years age group. Animal or marine park attendance rated highest in the 35–44 years age group and popular music performances rated highest in 18–24 years age group.

Females had higher attendance rates than males across all age groups, the most significant difference found in library attendance, females rated 52.7% compared with males at 38.5%.

Linked with educational attainment, 6 out of the 12 venues and activities found highest attendance ratings to a cultural venue or activity associated with persons with a higher degree. Alternatively, 7 out of the 12 venues and activities found lowest attendance ratings associated with persons working in skilled vocational areas.

Attendance rates for persons living in the six State capital cities were higher than those of persons residing in the remainder of the country for all venues and activities, with the exception of other performing arts. Residents of the ACT had the highest attendance rates for 8 of the 12 venues and activities.

ATTENDANCE AT SELECTED CULTURAL VENUES IN ACT



1**BUSINESS EXPECTATIONS: TRADING PERFORMANCE, OPERATING INCOME(a)**

	<i>ACT</i>	<i>Aust.</i>
	%	%
Short-term		
Dec qtr 1997–Mar qtr 1998	-1.1	-0.3
Mar qtr 1998–Jun qtr 1998	-0.1	1.7
Jun qtr 1998–Sep qtr 1998	2.7	1.1
Sep qtr 1998–Dec qtr 1998	3.5	1.6
Dec qtr 1998–Mar qtr 1999	-2.7	-0.9
Mar qtr 1999–Jun qtr 1999	0.4	1.8
Jun qtr 1999–Sep qtr 1999	1.4	1.8
Sep qtr 1999–Dec qtr 1999	1.9	2.4
Dec qtr 1999–Mar qtr 2000	-5.4	-0.7
Mar qtr 2000–Jun qtr 2000	1.5	1.6
Medium-term		
Dec qtr 1997–Dec qtr 1998	2.9	3.0
Mar qtr 1998–Mar qtr 1999	2.6	2.6
Jun qtr 1998–Jun qtr 1999	6.9	2.7
Sep qtr 1998–Sep qtr 1999	7.5	2.9
Dec qtr 1998–Dec qtr 1999	2.6	2.7
Mar qtr 1999–Mar qtr 2000	1.7	2.3
Jun qtr 1999–Jun qtr 2000	5.7	3.3
Sep qtr 1999–Sep qtr 2000	2.8	2.7
Dec qtr 1999–Dec qtr 2000	0.1	1.8
Mar qtr 2000–Mar qtr 2001	1.6	2.5

(a) This data are all expectations and have not been revised for previous quarters.

	Unit	ACT			Aust.		
		Latest figure	% change from		Latest figure	% change from	
			Previous period	Same period previous year		Previous period	Same period previous year
POPULATION, VITAL AND LABOUR							
POPULATION, Dec qtr 99	'000	311.2	0.1	0.9	19 080.8	0.3	1.2
Natural increase	no.	660	1.9	-12.2	31 774	21.4	1.2
Net migration	no.	-231	278.7	-67.2	27 582	-3.1	0.6
Total increase	no.	429	-26.9	793.8	59 356	8.6	0.9
LABOUR FORCE, May 00							
Original series							
Employed	'000	166.1	0.2	4.5	9 016.5	0.1	3.4
Unemployed	'000	9.8	7.7	-3.9	643.0	-2.5	-6.6
Unemployment rate	%	5.6	0.4	-0.4	6.7	-0.1	-0.6
Participation rate	%	72.8	0.2	1.3	63.6	-0.1	0.7
Long-term unemployed, Apr 00	no.	1 951	7.4	-38.7	187 658	-0.8	-10.5
Long-term unemployed as percentage of total unemployed		21.4	3.7	-11.0	28.5	1.5	-1.2
Trend series							
Employed	'000	165.9	0.1	5.0	9 015.4	0.2	3.1
Unemployed	'000	9.6	2.1	-3.0	654.4	0.1	-5.1
Unemployment rate	%	5.5	0.1	-0.4	6.8	—	-0.5
Participation rate	%	72.7	—	1.7	63.7	0.1	0.7
WAGE AND SALARY EARNERS							
Number employed—Trend series, Nov qtr 99							
Public sector	'000	69.0	2.1	3.6	1 450.6	—	0.6
Private sector	'000	79.2	-2.9	6.3	5 710.8	-0.7	1.1
Total	'000	148.2	-0.7	5.0	7 161.4	-0.6	1.0
Gross earnings—Original series, Dec qtr 99							
Public sector	\$m	816.7	-10.4	3.8	15 280.6	-2.8	1.6
Private sector	\$m	562.4	-6.7	-4.2	48 726.8	1.9	3.9
Total	\$m	1 379.0	-8.9	0.4	64 007.9	0.8	3.3
JOB VACANCIES, Feb qtr 00	'000	3.9	2.6	56.0	112.7	9.2	36.1
INDUSTRIAL DISPUTES IN PROGRESS, Feb 00							
Working days lost	'000	0.1	—	—	63.6	148.4	32.8
Days lost per '000 employees (year ended Jan 00)	no.	30.0	—	-9.1	91.0	2.2	24.7
BUILDING AND CONSTRUCTION							
HOUSING FINANCE, Apr 00							
Secured commitments to individuals for							
Original series							
Construction of dwellings	\$m	14.0	7.7	75.0	635.0	-29.6	-20.1
Purchase of new dwellings	\$m	2.0	-50.0	-33.3	129.0	-28.3	-12.8
Purchase of established dwellings	\$m	71.0	-28.3	1.4	3 183.0	-23.8	-4.5
Re-financing	\$m	14.0	-22.2	—	876.0	-25.1	6.3
Total housing commitments	\$m	106.0	-22.6	9.3	5 236.0	-24.6	-5.0
Seasonally adjusted series							
Total housing commitments	\$m	123.0	5.1	19.4	5 869.0	-1.7	3.8
Trend series							
Dwelling units financed	no.	892	-3.1	8.9	43 116	-3.3	-0.1
Total housing commitments	\$m	122.0	-1.6	16.2	6 053.0	-3.3	7.9
BUILDING APPROVALS, Apr 00							
Original series							
Dwelling units	no.	130	-24.0	-11.6	11 420	-22.1	-8.9
Value of new residential	\$m	17.5	-19.0	-1.7	1 415.8	-22.6	—
Value of residential alterations and additions	\$m	4.6	-6.1	27.8	239.0	-21.0	4.4
Value of non-residential	\$m	22.9	367.3	11.2	936.1	3.0	14.5
Value of total building	\$m	45.1	43.6	7.4	2 590.8	-14.8	5.2
Trend series							
Dwelling units	no.	215	0.5	30.3	13 747	-4.1	4.3

	Unit	ACT			Aust.		
		% change from			% change from		
		Latest figure	Previous period	Same period previous year	Latest figure	Previous period	Same period previous year
BUILDING AND CONSTRUCTION continued							
BUILDING COMMENCEMENTS, Dec qtr 99							
New houses	no.	392	50.2	43.6	28 906	1.5	14.7
Value of houses commenced	\$m	52.7	36.9	50.6	3 751.8	3.5	24.4
Value of non-residential building commenced	\$m	34.2	4.0	4.9	2 816.2	-5.2	-11.6
Value of total commencements	\$m	144.3	14.7	44.4	8 741.3	-6.6	8.5
PRICE INDEXES							
Established house price index, Mar qtr 99		140.0	2.9	8.9	143.9	1.8	9.6
ENGINEERING CONSTRUCTION (Dec qtr 99)							
Private sector							
Value of work commenced	\$m	11.0	-28.1	-37.9	2 697.9	-2.3	-6.4
Value of work done	\$m	17.2	-31.2	13.9	2 972.1	-0.8	0.2
Value of work yet to be done	\$m	19.8	-23.3	29.4	5 112.2	-3.0	-13.4
Value of work done by public sector	\$m	23.9	-17.9	12.2	1 855.2	17.6	10.2
PRICES, WAGES AND CONSUMER SPENDING							
CONSUMER PRICE INDEX, Mar qtr 99							
Food(a)		130.6	-0.2	1.2	129.1	0.2	1.3
Housing(a)		99.0	1.9	5.0	100.7	1.1	4.7
Transportation(a)		135.3	3.0	7.0	130.1	2.9	7.3
All groups(a)		124.9	1.0	2.9	125.2	0.9	2.8
AVERAGE WEEKLY EARNINGS, Feb 00							
Original series							
Males	\$	962.0	0.9	8.9	824.5	1.7	4.5
Females	\$	809.6	-2.2	4.0	691.4	1.2	3.5
Persons	\$	894.4	-0.4	6.4	775.0	1.5	4.1
Trend series							
Males	\$	966.1	3.0	9.1	820.7	1.3	3.7
Females	\$	817.7	1.3	5.6	689.6	1.0	3.5
Persons	\$	901.9	2.2	7.4	772.0	1.2	3.6
WAGE COST INDEX, Mar qtr 99							
Public sector(b)		106.3	0.5	1.8	108.5	0.6	2.5
Private sector(b)		107.2	0.9	3.4	107.5	0.7	2.9
Total(b)		106.6	0.6	2.4	107.7	0.7	2.8
RETAIL TURNOVER, Apr 00							
Original series							
Food retailing	\$m	85.4	-0.1	14.3	4 776.4	-3.8	1.5
Department stores	\$m	25.8	18.3	8.4	1 024.9	13.6	7.5
Hospitality and services	\$m	36.4	5.2	2.0	2 016.9	-6.4	0.8
All other retailing	\$m	85.2	-4.1	11.4	3 767.6	-4.7	0.5
Total	\$m	232.8	0.9	10.5	11 585.8	-3.3	1.5
Trend series							
Food retailing	\$m	86.0	0.9	7.6	4 860.5	-0.2	1.0
Department stores	\$m	25.2	-0.8	4.6	1 073.3	0.1	3.0
Hospitality and services	\$m	35.0	1.2	2.0	2 100.6	-0.2	3.4
All other retailing	\$m	92.6	1.1	13.8	4 097.3	-0.2	2.9
Total	\$m	238.8	0.8	8.7	12 131.7	-0.1	2.2

(a) Base year: 1989-90 = 100.0.

(b) Base of each index: September quarter 1997 = 100.0.

	Unit	ACT			Aust.		
		% change from			% change from		
		Latest figure	Previous period	Same period previous year	Latest figure	Previous period	Same period previous year
TOURISM AND TRANSPORT							
HOTELS, MOTELS AND GUEST HOUSE ACCOMMODATION, Dec qtr 99							
Original series							
Room nights	'000	260.1	-8.7	7.1	10 413.6	0.2	5.1
Takings at current prices	\$m	28.2	11.0	25.3	1 077.8	13.9	8.0
Guest arrivals	'000	201.6	-11.2	3.4	8 312.7	0.1	4.4
Guest nights	'000	424.7	-11.9	1.3	18 490.1	-0.7	5.3
Room occupancy rate	%	60.1	-6.3	1.2	59.7	-1.1	0.3
NEW MOTOR VEHICLE REGISTRATIONS, Apr 00							
Motor vehicles	no.	921	-19.9	-10.8	50 440	-25.5	-15.9
Seasonally adjusted motor vehicles	no.	1 130	11.7	-1.7	59 845	-3.2	-10.6
Trend motor vehicles	no.	1 122	-1.2	-4.4	61 925	-1.0	-5.6
STATE ACCOUNTS							
STATE ACCOUNTS, Dec qtr 99(a)							
Trend series (chain volume measure)(b)							
Household final consumption expenditure	\$m	1 629	0.7	3.0	89 911	1.1	4.3
General government final consumption expenditure	\$m	2 833	2.6	9.9	27 739	1.2	5.7
Private gross fixed capital formation	\$m	361	5.9	22.4	29 145	-0.6	2.0
Public gross fixed capital formation	\$m	110	-1.8	-7.6	7 670	4.9	19.0
State final demand	\$m	4 923	1.9	7.6	153 452	1.0	4.2
GROSS STATE PRODUCT (trend, chain volume measures) 1998-99	\$m	11 822	2.6	..	591 546	4.5	..
PRIVATE NEW CAPITAL EXPENDITURE, Dec qtr 99							
Original series (at current prices)							
Buildings and structures	\$m	23	35.3	-20.7	2 989	-4.7	-27.1
Equipment, plant and machinery	\$m	71	26.8	-15.5	7 962	5.9	1.5
Total	\$m	94	30.6	-16.8	10 950	2.7	-8.4
Trend series (at current prices)							
Buildings and structures	\$m	20	5.3	-16.7	2 809	-4.3	-24.0
Equipment, plant and machinery	\$m	68	19.3	-5.6	7 546	-0.7	-4.0
Total	\$m	88	15.8	-8.3	10 355	-1.7	-10.4

(a) Quarterly state final demand details are released as a special data service (Product no. 5206.0.40.001).

(b) Reference year for chain volume measures is 1996-97.

Source: ABS publications: Australia Demographic Statistics (Cat. no. 3101.0); Australian National Accounts: State Accounts (Cat. no. 5242.0); Building Activity, Australia (Cat. no. 8752.0); Building Approvals, Australia (Cat. no. 8731.0); Consumer Price Index (Cat. no. 6401.0); Housing Finance for Owner Occupation, Australia (Cat. no. 5609.0); House Price Indexes: Eight Capital Cities (Cat. no. 6416.0); Industrial Disputes, Australia (Cat. no. 6321.0); Job Vacancies and Overtime, Australia (Cat. no. 6354.0); Labour Force, Australia, Preliminary (Cat. no. 6202.0); Labour Force, Australia (Cat. no. 6203.0); New Motor Vehicle Registration, Australia (Cat. no. 9301.0); Price Index of Materials Used in Housing Building (Cat. no. 6408.0); Private New Capital Expenditure, State Estimates (Cat. no. 5646.0); Retail Trade, Australia (Cat. no. 8501.0); Tourism Indicators, Australia (Cat. no. 8634.0); Tourism Accommodation, Australian Capital Territory (Cat. no. 8635.8).

	Unit	Latest period	NSW	Vic.	Qld	SA	WA	Tas.	NT	ACT	Aust.
POPULATION	'000	Dec qtr 99	6 451.7	4 741.5	3 539.5	1 495.8	1 873.8	469.9	194.3	311.2	19 080.8
LABOUR FORCE (trend)											
Employed persons	'000	May 00	3 044.9	2 240.2	1 678.3	675.0	925.0	197.8	90.9	165.9	9 015.4
Unemployment rate	%	May 00	5.8	6.9	8.0	8.4	6.6	9.2	5.0	5.5	6.8
WAGE AND SALARY EARNERS (trend)											
Public sector	'000	Nov qtr 99	465.1	300.2	291.9	112.7	148.9	40.8	21.8	69.0	1 450.6
Private sector	'000	Nov qtr 99	1 931.0	1 517.8	1 011.4	416.0	584.7	118.5	52.1	79.2	5 710.8
Total public and private sector (trend)	'000	Nov qtr 99	2 396.2	1 818.0	1 303.3	528.7	733.5	159.3	73.9	148.2	7 161.4
STATE ACCOUNTS(a)											
Gross state product (chain volume measures)	\$m	1998-99	209 937	151 213	96 000	40 493	63 198	11 059	6 460	11 822	89 911
PRIVATE NEW CAPITAL EXPENDITURE (trend)											
Total	\$m	Dec qtr 99	3 426	2 782	1 762	542	1 436	109	261	88	10 355
BUILDING APPROVALS											
Dwelling units approved(original)	no.	Apr 00	3 363	3 251	2 473	643	1 375	102	83	130	11 420
Dwelling units approved (trend)	no.	Apr 00	3 849	4 162	2 816	885	1 683	142	107	215	13 747
Value of non-residential building approved (original)	\$m	Apr 00	380.7	229.2	137.9	58.7	87.5	7.6	11.6	22.9	936.1
Value of all buildings approved (original)	\$m	Apr 00	902.0	716.4	472.2	135.3	273.8	20.1	25.9	45.1	2 590.8
ENGINEERING CONSTRUCTION											
Value of engineering construction work done	\$m	Dec qtr 99	1 481.6	784.0	1 380.2	294.2	717.7	53.1	75.3	41.1	4 827.3
AVERAGE WEEKLY EARNINGS (trend)											
Full-time adult ordinary time	\$	Feb 00	810.9	758.5	716.0	717.8	785.6	719.3	782.2	901.9	772.0
RETAIL TRADE (trend)											
Retail turnover	\$m	Apr 00	4 161.8	2 893.8	2 276.5	890.1	1 268.3	274.9	133.2	238.8	12 131.7
HOTELS, MOTELS & GUEST HOUSE ACCOMMODATION											
Room nights occupied	'000	Dec qtr 99	3 423.1	1 672.7	2 882.5	562.2	984.1	284.3	344.6	260.1	10 413.6
Room occupancy rate	%	Dec qtr 99	60.9	58.1	60.7	58.4	57.6	56.0	60.2	60.1	59.7
NEW MOTOR VEHICLE REGISTRATIONS (trend)	no.	Apr 00	21 564	16 398	11 792	3 597	5 604	1 253	595	1 122	61 925
	Unit	Latest period	Syd.	Melb.	Bris.	Adel.	Perth	Hob.	Dar.	Canb.	Aust.
CONSUMER PRICE INDEX											
Food(d)		Mar qtr 00	129.6	128.3	127.9	131.2	130.4	127.8	127.4	130.6	129.1
Housing(d)		Mar qtr 00	108.6	91.7	105.1	97.9	95.1	98.8	117.5	99.0	100.7
Transportation(d)		Mar qtr 00	131.1	129.2	128.5	130.4	130.4	126.6	126.2	135.3	130.1
All Groups(d)		Mar qtr 00	125.8	124.7	125.5	126.8	123.1	125.3	124.4	124.9	125.2
AVERAGE RETAIL PRICES (cents)											
Milk, carton, supermarket sales	1 litre	Mar qtr 00	131	146	135	142	146	134	144	120	n.a.
Bread, white loaf, sliced, supermarket sales	680 g	Mar qtr 00	234	241	212	215	224	243	225	232	n.a.
Beef, rump steak	1 kg	Mar qtr 00	1 293	1 114	1 131	1 238	1 206	1 051	1 190	1 275	n.a.
Chicken, frozen	1 kg	Mar qtr 00	370	349	318	377	353	371	391	364	n.a.
Potatoes	1 kg	Mar qtr 00	112	140	101	73	150	109	132	132	n.a.
Coffee, instant (jar)	150 g	Mar qtr 00	614	622	614	555	644	661	612	636	n.a.
Scotch nip, public bar	30 ml	Mar qtr 00	340	334	281	369	393	266	333	280	n.a.
Private motoring petrol											
Leaded	1 litre	Mar qtr 00	85.4	82.4	75.0	83.6	85.1	90.1	92.2	88.9	n.a.
Unleaded	1 litre	Mar qtr 00	82.6	79.9	72.3	81.0	82.5	88.1	89.8	86.2	n.a.

(a) State estimates are not comparable to national estimates from the June quarter 1995 due to revised methodology used in *Australian National Accounts, State Accounts* (Cat. no. 5242.0).

(b) Experimental series. Users are cautioned these estimates are derived indirectly by calculating a deflator from the expenditure components of the state series concerned. Therefore, in general, the sum of the state estimates does not equal the estimates for Australia.

(c) Reference year for chain volume measures is 1996-97.

(d) Base year: 1989-90 = 100.0.

	Latest period	NSW	Vic.	Qld	SA	WA	Tas.	NT	ACT	Aust.
POPULATION	Dec qtr 99	0.4	0.3	0.4	0.1	0.3	—	0.5	0.1	0.3
LABOUR FORCE (trend)										
Employed persons	May 00	0.5	0.2	0.2	-0.1	-0.1	-0.2	-0.2	0.1	0.2
Unemployment rate	May 00	—	0.1	—	0.1	0.1	0.1	0.1	0.1	—
WAGE AND SALARY EARNERS (trend)										
Pubic sector	Nov qtr 99	-0.4	—	0.9	-0.9	-0.5	—	-0.5	2.1	—
Private sector	Nov qtr 99	-2.5	0.9	-1.7	1.4	2.3	-2.8	-0.2	-2.9	-0.7
Total public and private sector	Nov qtr 99	-2.1	0.8	-1.1	0.9	1.7	-2.1	-0.3	-0.7	-0.6
STATE ACCOUNTS(a)										
Gross state product (chain volume measures)(b)(c)	1998-99	4.1	6.2	4.5	2.1	2.1	2.5	7.6	2.6	1.1
PRIVATE NEW CAPITAL EXPENDITURE (trend)										
Total (at current prices)	Dec qtr 99	-2.0	-1.8	0.3	-3.7	-3.3	-1.8	6.5	15.8	-1.7
BUILDING APPROVALS										
Dwelling units approved (original)	Apr 00	-10.8	-31.1	-17.5	-34.0	-22.2	-38.2	-5.7	-24.0	-22.1
Dwelling units approved (trend)	Apr 00	-3.5	-2.8	-3.0	-4.5	-6.4	-8.4	-13.0	0.5	-4.1
Value of non-residential building approved (original)	Apr 00	-13.6	19.3	21.6	-0.5	18.2	-18.3	-25.2	367.3	3.0
Value of all buildings approved (original)	Apr 00	-14.2	-22.4	-4.6	-22.5	-10.7	-34.1	-9.4	43.6	-14.8
ENGINEERING CONSTRUCTION										
Value of engineering construction work done	Dec qtr 99	4.0	6.4	11.7	-21.3	14.5	13.9	-0.8	-24.0	5.6
AVERAGE WEEKLY EARNINGS (trend)										
Full-time adult ordinary time	Feb 00	1.1	1.0	0.9	1.2	1.4	0.8	0.7	2.2	1.2
RETAIL TRADE (trend)										
Retail turnover	Apr 00	-0.1	-0.6	0.1	-0.1	0.4	0.4	0.2	0.8	-0.1
HOTELS, MOTELS & GUEST HOUSE ACCOMMODATION										
Room nights occupied	Dec qtr 99	2.3	5.2	-5.7	10.1	2.4	38.3	-22.2	-8.7	0.2
Room occupancy rate	Dec qtr 99	-0.2	2.1	-4.3	3.9	-1.2	15.3	-17.5	-6.3	-1.1
NEW MOTOR VEHICLE REGISTRATIONS (trend)	Apr 00	-1.3	-2.5	2.5	-3.5	-1.3	0.5	-2.6	-1.2	-1.0
	Latest period	Syd.	Melb.	Bris.	Adel.	Perth	Hob.	Dar.	Canb.	Aust.
CONSUMER PRICE INDEX										
Food(d)	Mar qtr 00	—	-0.2	1.2	0.6	0.9	0.2	1.2	-0.2	0.2
Housing(d)	Mar qtr 00	1.2	1.4	1.2	1.0	—	1.4	-0.3	1.9	1.1
Transportation(d)	Mar qtr 00	3.0	3.2	3.0	2.4	2.7	2.3	2.4	3.0	2.9
All Groups(d)	Mar qtr 00	0.9	1.0	1.1	0.9	0.3	1.0	0.6	1.0	0.9
AVERAGE RETAIL PRICES (cents)										
Milk, carton, supermarket sales	Mar qtr 00	1.6	2.8	3.8	0.7	—	3.1	1.4	0.8	n.a.
Bread, white loaf, sliced, supermarket sales	Mar qtr 00	0.9	0.8	-0.5	-1.8	1.8	1.7	2.7	0.9	n.a.
Beef, rump steak	Mar qtr 00	3.5	2.5	4.1	8.6	1.3	2.6	0.1	2.3	n.a.
Chicken, frozen	Mar qtr 00	1.9	-4.9	-2.8	0.5	—	—	-5.6	1.1	n.a.
Potatoes	Mar qtr 00	-11.8	-17.6	-15.1	-30.5	-1.3	17.2	-3.6	-6.4	n.a.
Coffee, instant (jar)	Mar qtr 00	5.5	3.2	1.7	-2.3	—	-4.6	-3.2	11.6	n.a.
Scotch nip, public bar	Mar qtr 00	0.9	1.8	1.4	0.3	—	0.8	0.3	1.8	n.a.
Private motoring petrol										
Leaded	Mar qtr 00	7.3	8.1	7.3	6.6	7.7	6.4	6.6	7.0	n.a.
Unleaded	Mar qtr 00	7.4	8.3	7.4	6.9	8.0	6.5	6.3	7.1	n.a.

(a) State estimates are not comparable to national estimates from the June quarter 1995 due to revised methodology used in *Australian National Accounts, State Accounts* (Cat. no. 5242.0).

(b) Experimental series. Users are cautioned these estimates are derived indirectly by calculating a deflator from the expenditure components of the state series concerned. Therefore, in general, the sum of the state estimates does not equal the estimates for Australia.

(c) Reference year for chain volume measures is 1996-97.

(d) Base year: 1989-90 = 100.0.

FOR MORE INFORMATION...

- INTERNET** www.abs.gov.au the ABS web site is the best place to start for access to summary data from our latest publications, information about the ABS, advice about upcoming releases, our catalogue, and Australia Now—a statistical profile.
- LIBRARY** A range of ABS publications is available from public and tertiary libraries Australia-wide. Contact your nearest library to determine whether it has the ABS statistics you require, or visit our web site for a list of libraries.
- CPI INFOLINE** For current and historical Consumer Price Index data, call 1902 981 074 (call cost 75c per minute).
- DIAL-A-STATISTIC** For the latest figures for National Accounts, Balance of Payments, Labour Force, Average Weekly Earnings, Estimated Resident Population and the Consumer Price Index call 1900 986 400 (call cost 75c per minute).

INFORMATION SERVICE

Data which have been published and can be provided within five minutes are free of charge. Our information consultants can also help you to access the full range of ABS information—ABS user pays services can be tailored to your needs, time frame and budget. Publications may be purchased. Specialists are on hand to help you with analytical or methodological advice.

- PHONE** **1300 135 070**
- EMAIL** **client.services@abs.gov.au**
- FAX** 1300 135 211
- POST** Client Services, ABS, GPO Box 796, Sydney 1041

WHY NOT SUBSCRIBE?

ABS subscription services provide regular, convenient and prompt deliveries of ABS publications and products as they are released. Email delivery of monthly and quarterly publications is available.

- PHONE** 1300 366 323
- EMAIL** subscriptions@abs.gov.au
- FAX** 03 9615 7848
- POST** Subscription Services, ABS, GPO Box 2796Y, Melbourne 3001



2130380006007
ISSN 1320-808X

RRP \$15.50

© Commonwealth of Australia 2000

Produced by the Australian Bureau of Statistics